

September 2022

Management of household packaging waste in Belgium – the story of Fost Plus

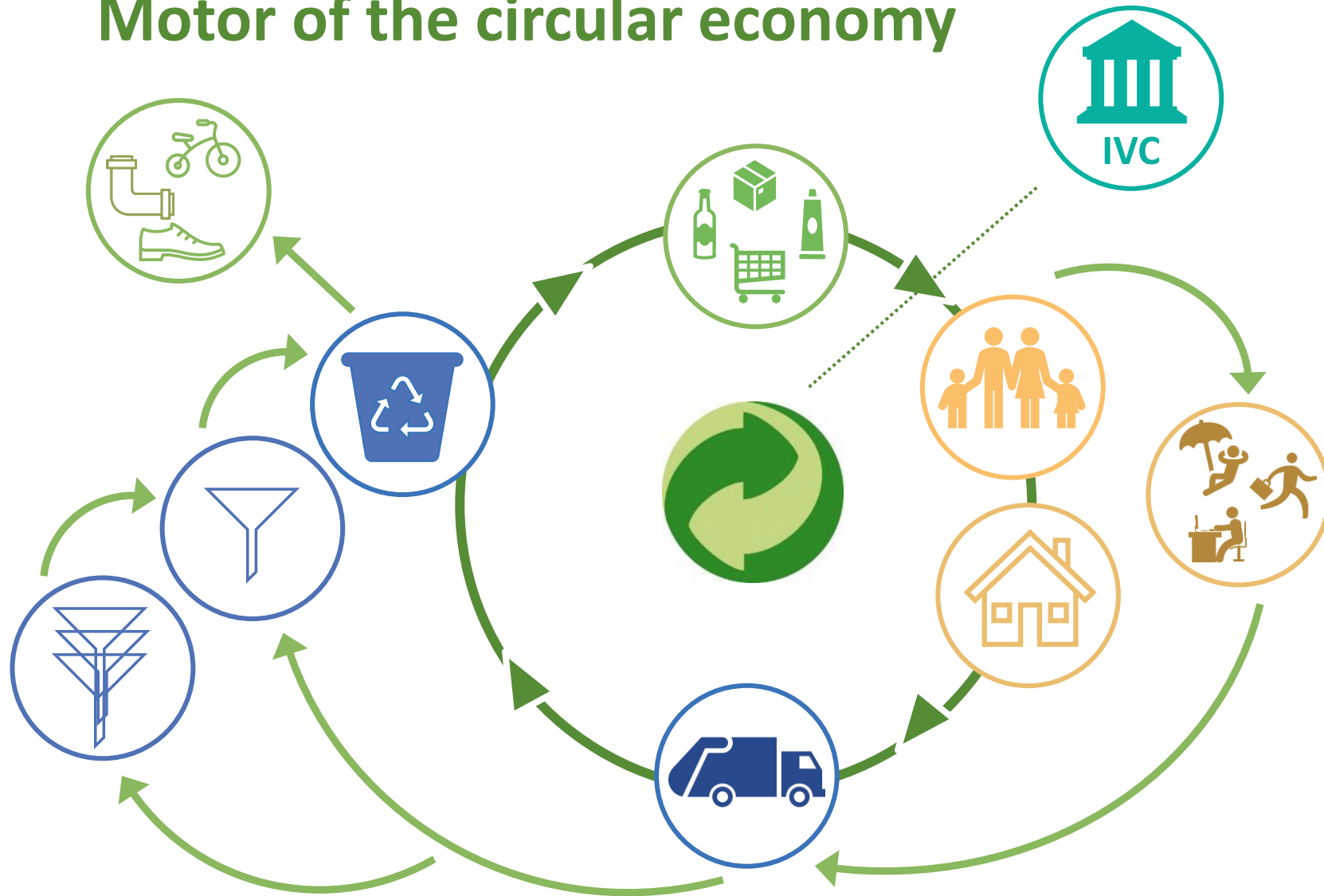
Thomas De Meester

Public & Regulatory Affairs Manager

The Belgian packaging law

- Transposition of European packaging law in Belgian legislation = **take-back & reporting obligation**
- = defined as an obligation for each packaging responsible (producer, private label retailer, importer) to meet annually the recycling and recovery targets of the law
 - Via own system (rarely used)
 - Via an accredited organisation (Fost Plus)
- The accredited organisation pays the full cost and determines HOW to reach the targets but : with respect for the municipal autonomy
- Fost Plus is accredited by the authorities for **household** packaging.
For commercial & industrial packaging: VAL-I-PAC.

Motor of the circular economy



Building blocks:

1. Uniform collection scenarios
2. Uniform recycling scenarios
3. Contracting power
4. Control of data flows
5. Control of material flows

Collection and sorting

- Co-operation with (inter)municipalities
- Standard agreement with a duration of 5 years
- Specifications for collection and sorting: quality criteria and administrative monitoring (MyFost)
- Public allocation according to legal procedures
- Services can also be provided by intermunicipality
- Payment: full cost of collection and sorting, communication,...

Recycling

- Collected and sorted packaging is allocated to recyclers on the basis of invitations to tender with detailed specifications
- Price indexation, linked to price evolution of raw materials

Our recipe for success: a uniform recycling scenario



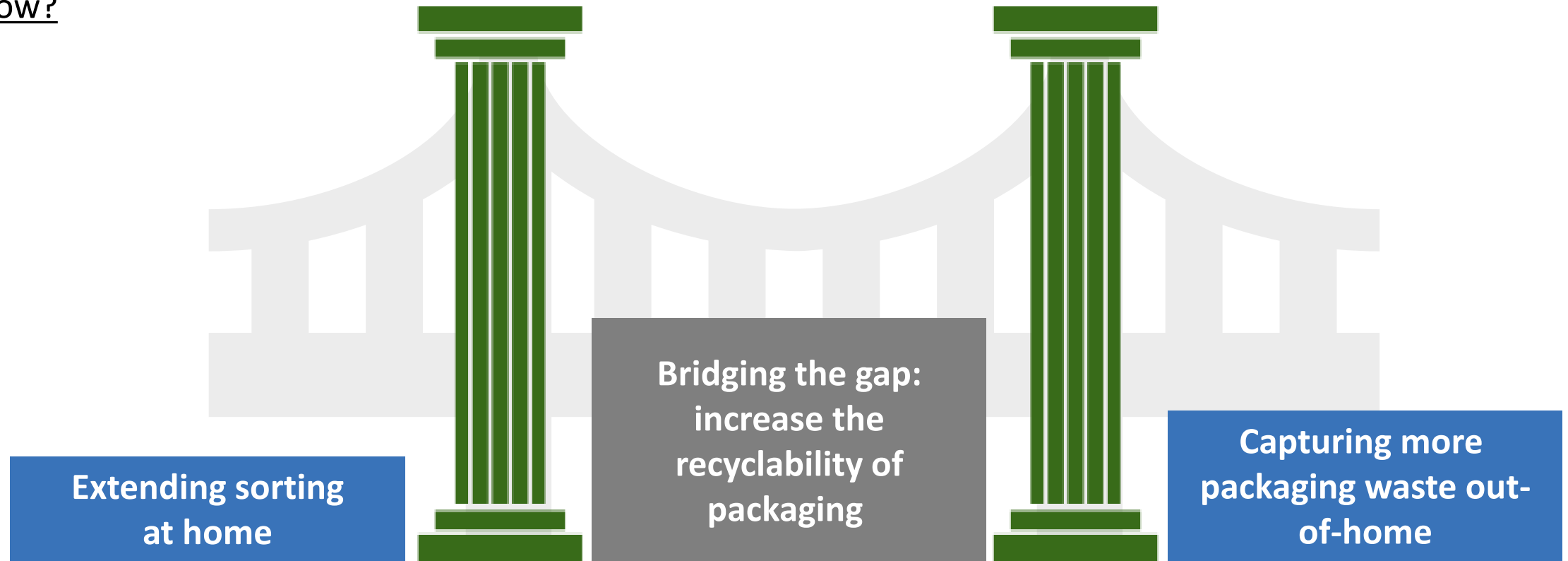
Key Factors for Success

- Industry and retail took the lead, and acted with solidarity
- High, up-front investment in strategic studies
 - rational and optimized collection scenario
- Tenders (collection, sorting, sale materials)
 - = transparency and competition
- Communication → Active participation of citizens
- Legal sorting obligation
- PAYT: High cost residual waste
- Geographic progression (10 years to cover total country)
- Good relations with all the partners involved
- Quality management (materials and data) + controls

A two-pillar approach to reach our goals

Ambition: a recycling solution for **all** household packaging by 2025

How?



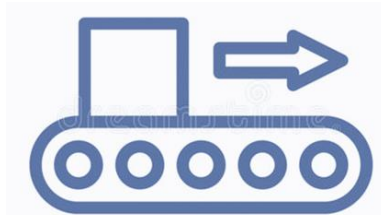
The extended blue bag as a catalyst for a local circular economy

2019



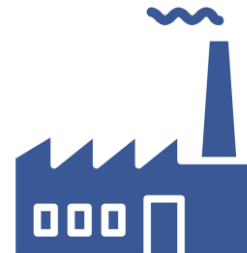
Extension of the PMD collection

2021

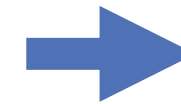


 5 new sorting centres

2022



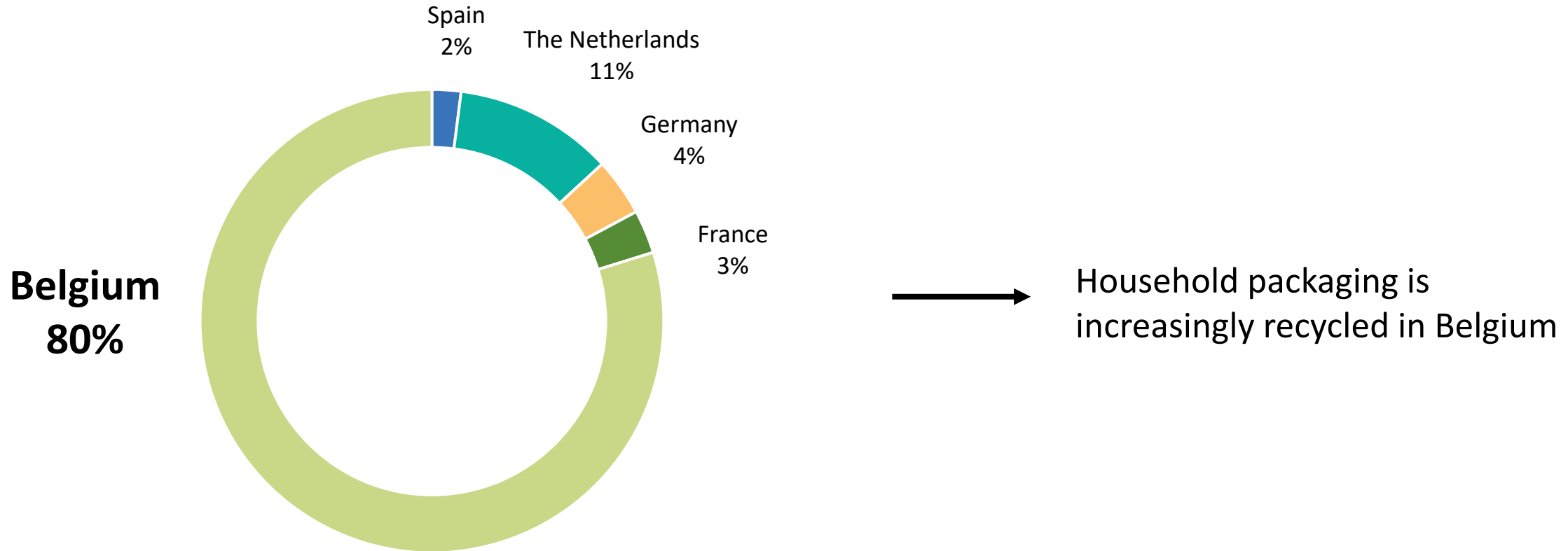
 5 new recycling centres



Belgium as a European recycling hub

Injection of 1 billion euros in the local circular economy

Delivering high quality resources for the European recycling market



Fost Plus data 2020

Design4Recycling: an approach for and with the industry

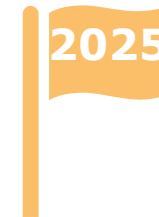
Starting from our members' declarations



17 Ktons of non-recyclable household packaging identified
= 2%!



Towards a recycling solution for 100% of the household packaging on the market



How?

1

Dialogue and expertise, in line with the existing sorting and recycling scenarios

2

Integration in existing sorting and recycling scenarios

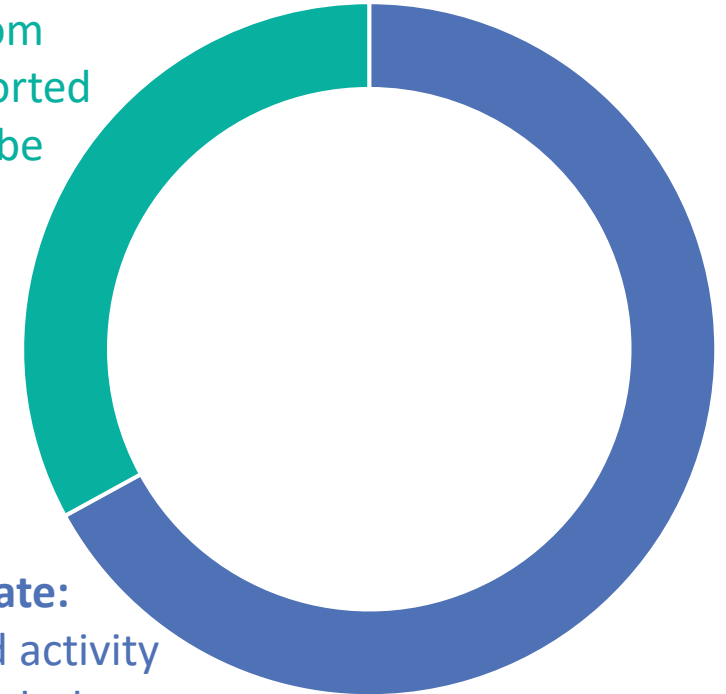
Individual support at company level (XL members)

Collective support at product category level

Green Dot: eco-modulation based on the circular deficit

- The principle: a strong financial incentive for companies to create packaging that is compatible with existing sorting and recycling scenarios in Belgium
- A unique EPR system in Europe, based on the actual costs of the recycling process
- Towards the lowest deficit in the circular economy: 15 euros per person

Revenues from the sale of sorted materials to be recycled



Green Dot rate: material and activity based through the recycling chain

Key figures 2021

11.521.238
Belgians



Total cost of Fost Plus system

€254 million



Door-to-door collection in

581
municipalities

Financed by sale of materials and

4.649
member companies of Fost Plus

Recycling data 2021



29,7 kg



16,6 kg



16,4 kg

RECYCLING RATE FOR HOUSEHOLD PACKAGING

A horizontal bar chart with a blue vertical axis on the left and a blue horizontal axis at the bottom. The bar is divided into two sections: a solid green section representing 89.8% and a grey hatched section representing the remaining 10.2%. The percentage '89,8%' is written in white inside the green section.

89,8%

Total recycled
721.994 tons

Questions?

Thomas.demeester@fostplus.be

Fost Plus

Olympiadenlaan 2 | avenue des Olympiades
1140 Brussel | Bruxelles

T +32 2 775 03 50
fostplus@fostplus.be



Follow us